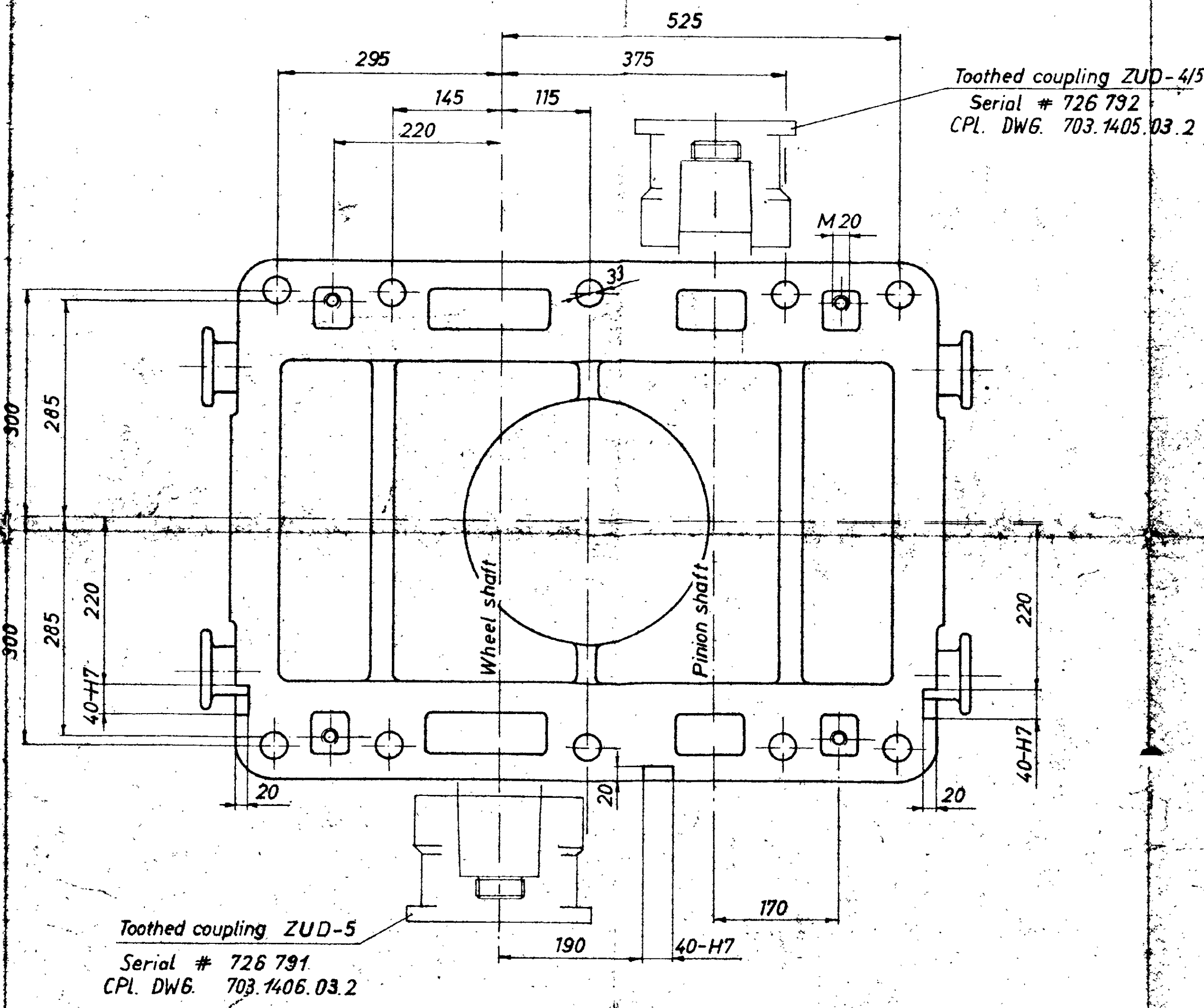


Oil inlet 400 l/min.  
Oil pressure 15 bar  
Viscosity 45°E / 50°C

Counter flange supplied by Maag

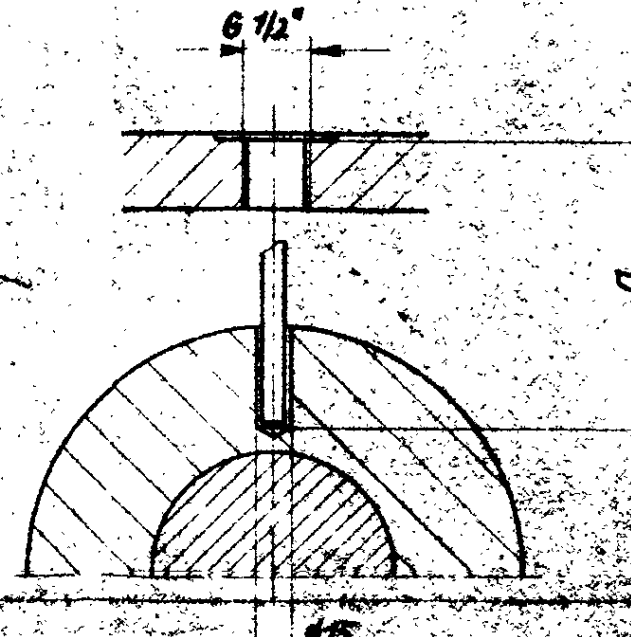
connection for pressure gauge (G 1/4")



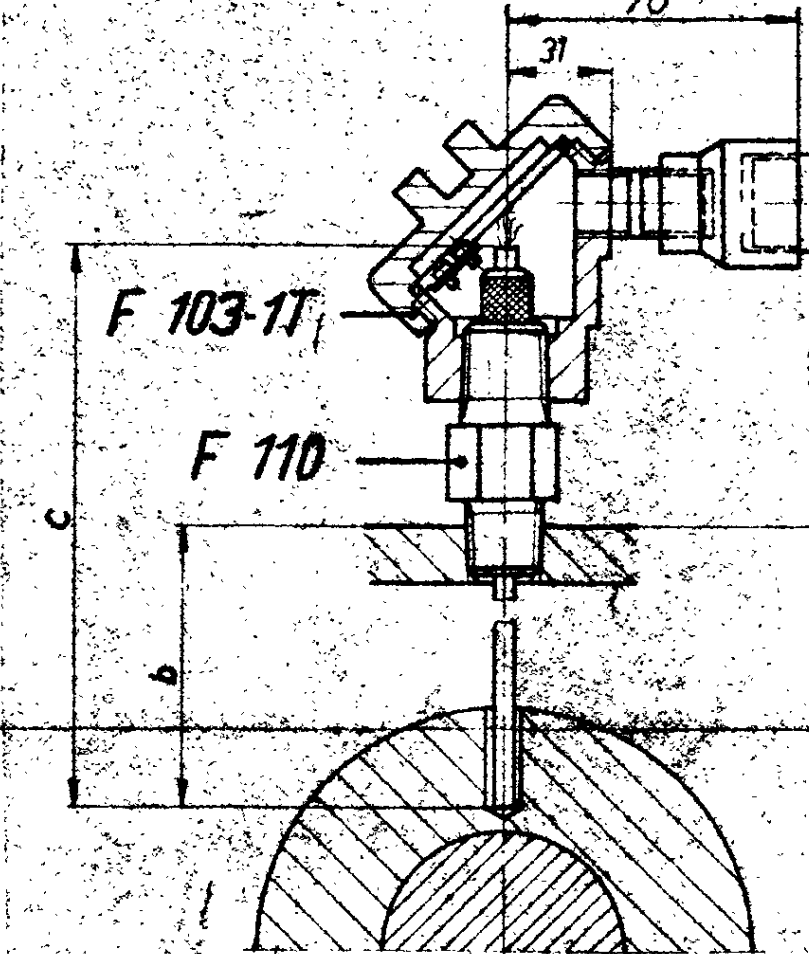
Toothed coupling ZUD-4/5  
Serial # 726 792  
CPL DWG. 703.1405.03.2

Toothed coupling ZUD-5  
Serial # 726 791  
CPL DWG. 703.1406.03.2

Mercury thermometer



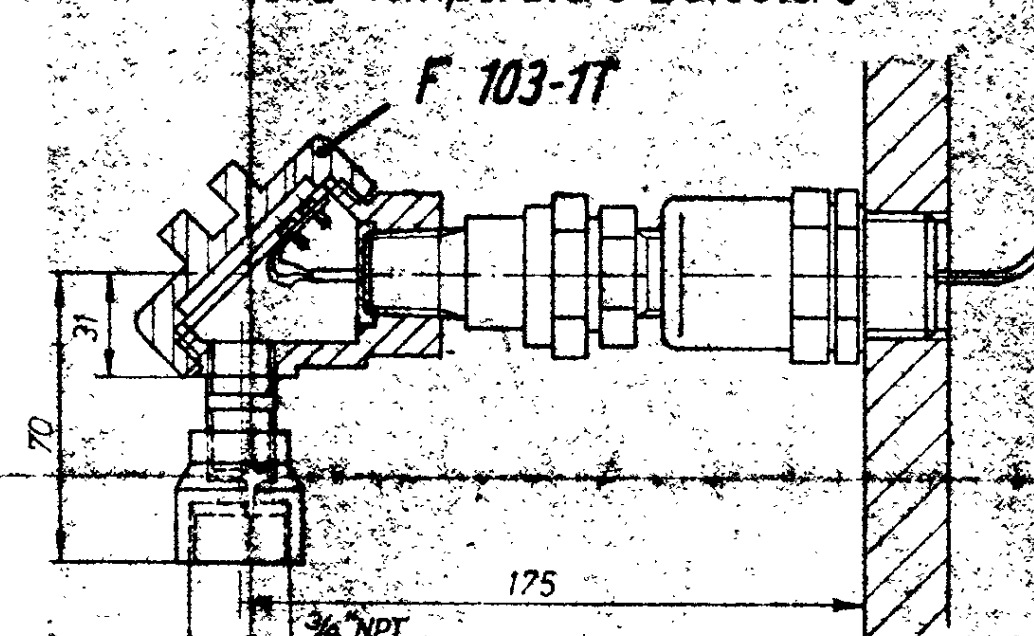
Minco temperatur detector



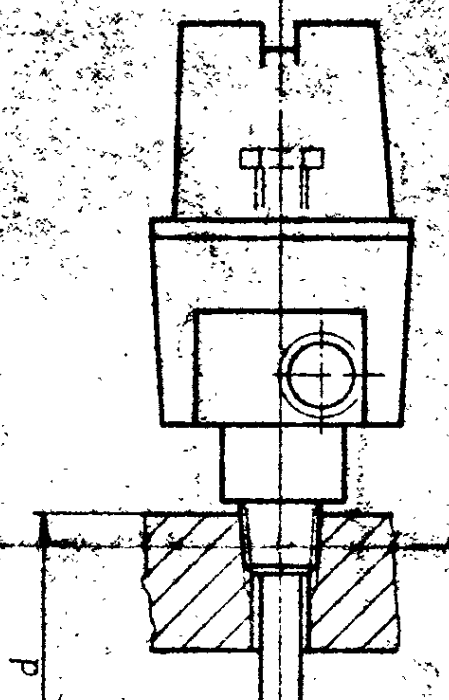
SIGLATE No	Model	a
TI 27 1	Mercury	232
TI 26 2	"	220
TI 25 3	"	735
TI 24 4	"	135
TI 23 5	"	228
TI 22 6	"	232

SIGLATE No	Model	b	c
TE 28 7	S4046P124Z4	218	315
TE 27 8	S4046P124Z4	221	315
TE 22 9	S4046P121Z4	210	307
TE 21 10	S4046P121Z4	212	307

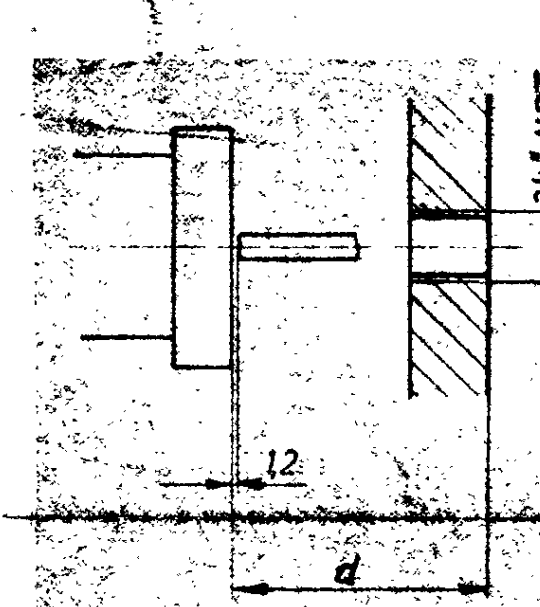
Sealing Assembly for Embedded Temperature Detectors



Radial vibration probe



Axial vibration probe



SIGLATE No	Model	Length
TE 26 11	Minco S341P 3S 70	1778
TE 25 12	" S341P 3S 70	1778
TE 24 13	" S341P 3S 70	1778
TE 23 14	" S341P 3S 70	1778
TE 22 15	" S341P3S70	1778
TE 21 16	" S341P3S70	1778
TE 20 17	" S341P3S70	1778
TE 19 18	" S341P3S70	1778

This design is the property of the Maag Gear-Wheel Co. Ltd. and is in no wise to be used without their consent. With-out written permission no drawing may neither be copied nor made accessible to third parties.  
14. Jan. 1982

SIGLATE No	Model	d
XE 6 21	21000-00-00-08708	220
XE 5 22	21000-00-00-08504	215
23		82

COMP. 1. 1. 82  
d 13.1.82  
c 13.1.81  
b 3.4.81  
a 23.3.81

Instrumentation changed  
Instrumentation

h.s. coupling Typ ZUD-4/5

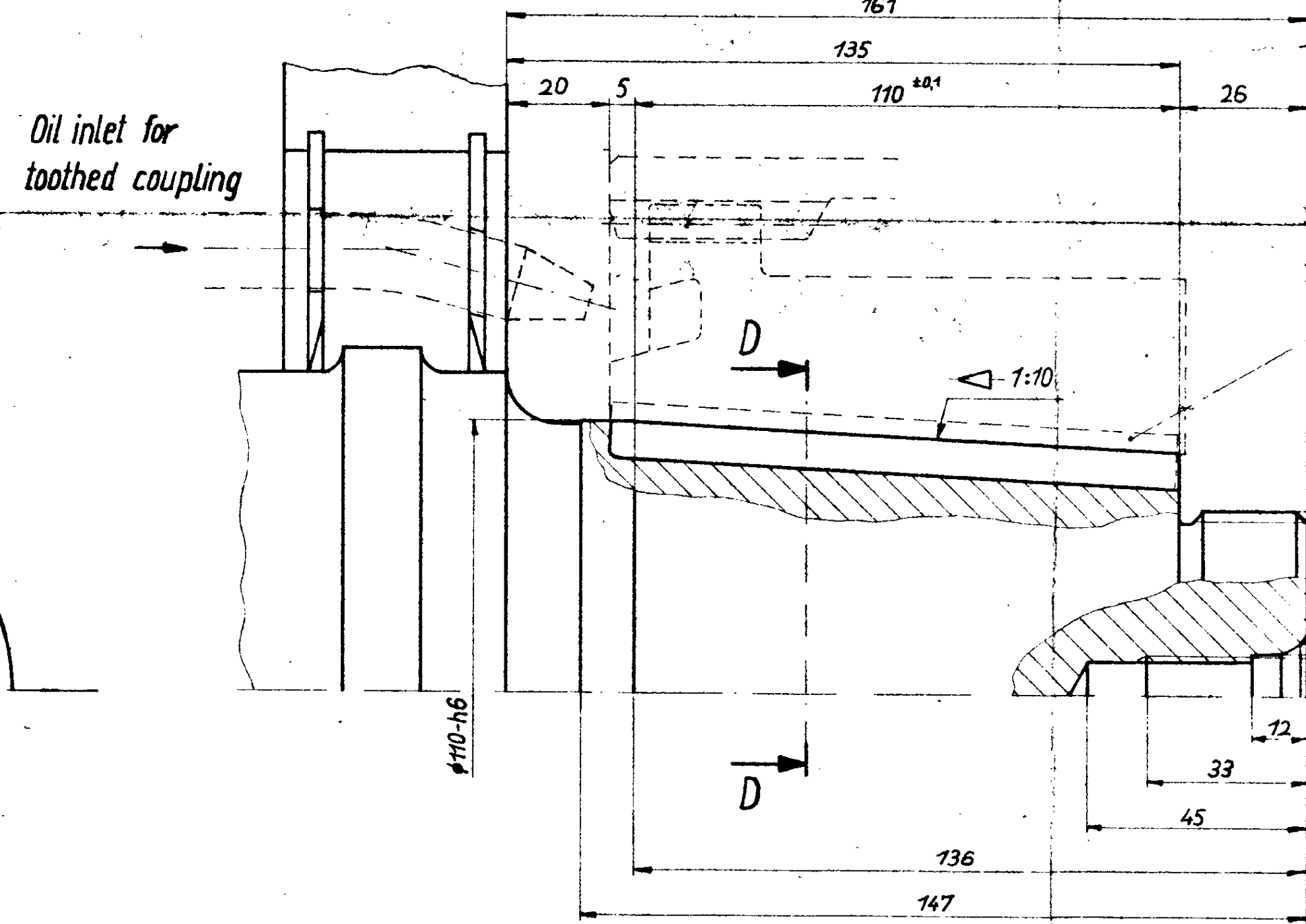
Increasing Gear GB-28  
N = 10750 kW  
n = 7683/9953 RPM

MAAG-ZAHNRÄDER AG ZÜRICH

721 1571 01 C

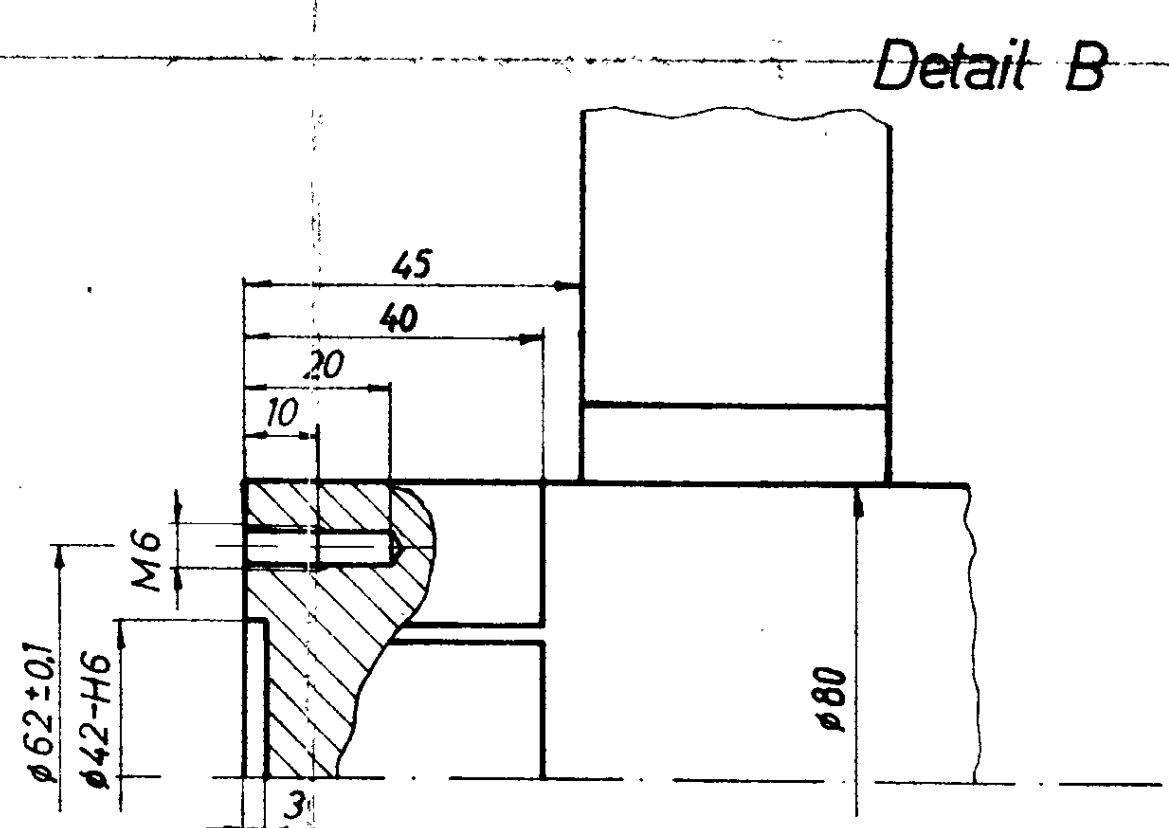
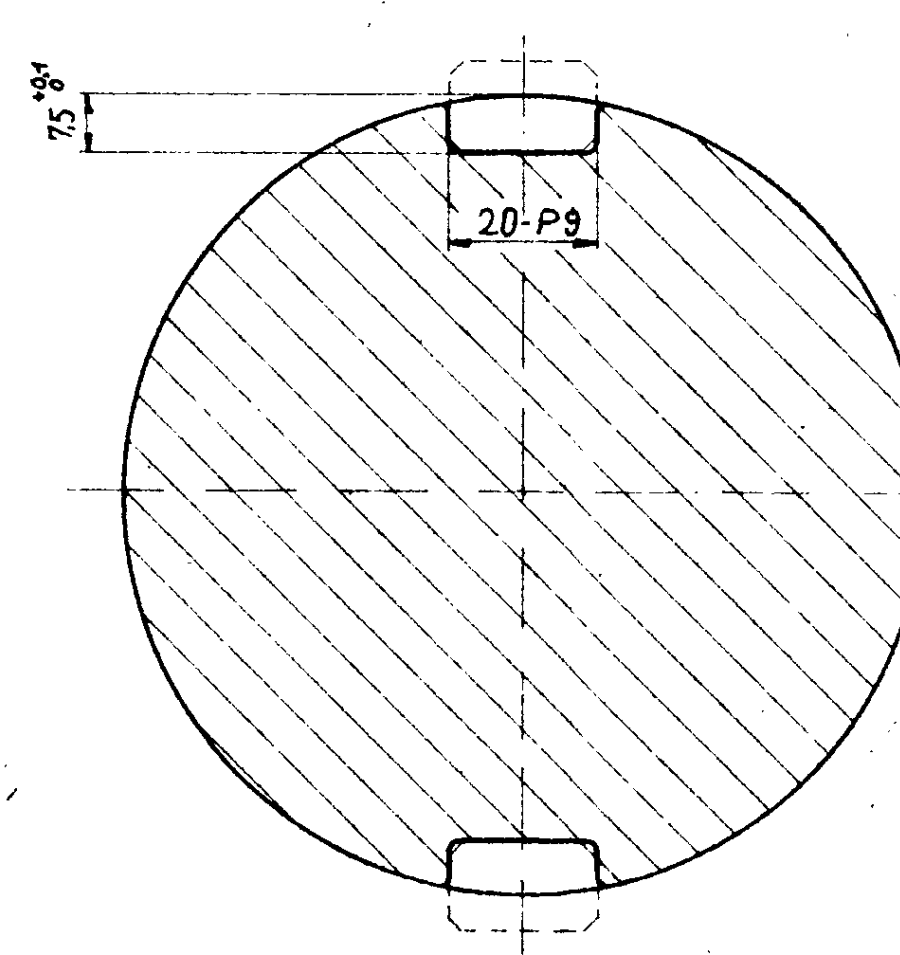
Weights	kg
Total	1750
Case lower part	640
Case upper part	273
Pinion	144
Wheel	194

Detail A/C

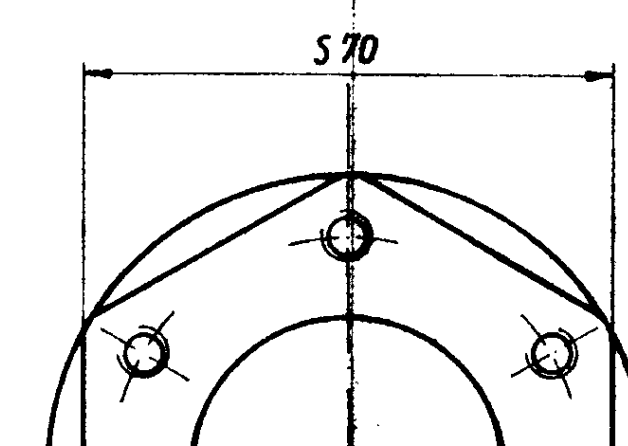


Taper from FT051

Section D-D



Detail B



Oil inlet for toothed coupling

wedge 20x12x115

20-Pg

1/16

1/17

1/18

1/19

1/20

1/21

1/22

1/23

1/24